



COMPANY **PROFILE**



"We offer a fascinating combination of imagination, millenary and craftsmanship making us Ghana's premier purveyor of METAL Art."





ACCENTS & ART LTD.



Contents

Vision, Mission and Values

Background

Accents and Art Ltd

The Board

The A&A Team

Services

Product Categories & Pictures of Products

Clientele

Pricing and Payment

Appendix



Vision

To be acknowledged as a powerful player on the market of innovative design, open minded to the preferences, lifestyles, and socio-cultural structure of our clients.



Mission

The mission of A&A is to anticipate and embrace the exciting preferences that today's customer seek and with a fascinating combination of imagination, millenary and craftsmanship turn this preference into dream products. We create knowledge in precision quality to support our uncompromising commitment to the quality of our exceptional products.

Values

- Precision Quality
- Design innovation
- On-time delivery
- Workforce Safety



Background

Accents & Art Ltd (A&A) is a limited liability Ghanaian company founded in May 2000 by Ms. Constance Elizabeth Swaniker, a master craftsperson, entrepreneur, and educationist. The A&A office, production facility and showroom is located at Bubiashie, a suburb of Accra.

Over the past twenty four years, our journey has been one of creative exploration; The outcome is a unique combination of exotic hard woods, wrought iron, cane and glass in the furnishing industry with emphasis on exclusivity. At the same time, we strive to meet the demanding organizational, scheduling and quality needs of homeowners, architects, interior designers and construction professionals.

Years of experience and a dedication to precision quality in craftsmanship, has brought the company to the forefront of the industry, providing an unparalleled combination of expertise and capabilities in transforming your environment into breathtaking works of art.

With our select group of artisans, we pay careful attention to minute details, giving our pieces a quality look and feel to meet global standards. Today, we have established ourselves as a symbol of timeless craftsmanship with an unlimited selection of traditional and contemporary design choices, high- end finishes, along with top of the line organization, customer service and quality.

A&A is the pioneer factory school in Ghana combining Industry work experience at A&A and academic training for students at the Design and Technology Institute (DTI). Years of this collaboration has churned out young people with high-quality training, work readiness, and entrepreneurship skills, specific skills or areas of expertise needed within industries.

Accents and Art is more than a business, it is a wholehearted passion to carry on the tradition of handcrafted iron - A passion to fulfil clients' visions for the truly distinctive and extraordinary both in style and quality. Just as Factory schools transformed the Industrial Revolution and politics in Europe during the 19th century and still continue to have immense significance in the contemporary world, so has A&A become a text case for policies on Precision quality and the importance of industry-academia cooperation in driving innovation and growth.





Accents and Art Company

BN 5878C 9080000055 AD-226354

Physical Address

#B79/5 Homowo Street, Bubiashie

Postal Address

P.O. Box KN80 Kaneshie-Accra

Tel: +233 273631715 277 350022 /+233 302

223395 Email: info@accents-art.com

accentsartss@gmail.com

Website: www.accentsandart.com

Auditors

MGI OAK Chartered Accountants

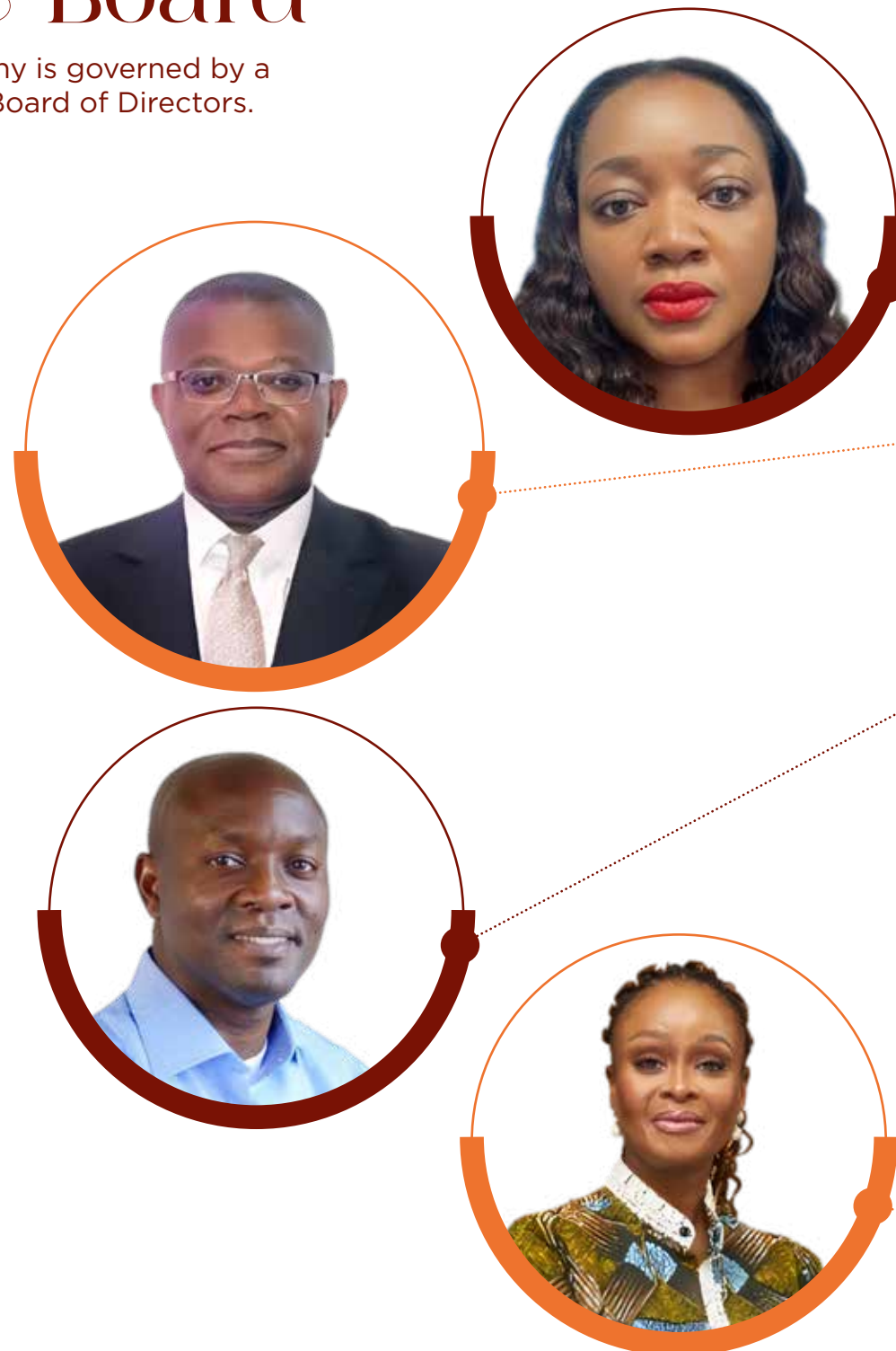
Bankers

Fidelity Bank

Consolidated Bank of Ghana

The Board

The Company is governed by a 4 member Board of Directors.



Mr. George Sarpong is the Board Chairman of Accents and Arts. He is an accomplished and respected Senior Business Executive with over 30 years' experience in leading business turnaround and marketing initiatives in multinational companies in the USA and West Africa. He is currently the CEO of GeoSarp Consulting Group, providing consulting services to corporate bodies and institutions in the areas of impactful corporate social investment programs, business development, and branding.

Ms. Apeadu is the Secretary of the Accents and Arts board of directors. She is an accomplished legal practitioner with a successful track record of leading in high profile commercial transactions and providing expert legal advice. Strong corporate legal practice and company secretarial background and experience in developing compliance programs, drafting and reviewing company policies and advising management on possible risks. She is currently a Senior Legal and Governance Manager at Enterprise Group PLC, a position she hold since 2019.

Mr. Kofi Opoku is a board member of Accents and Art, with over 25 years of experience as an accountant working with both national and international companies. He is a very solutions-focused, multi-faceted, High-performing, results-oriented leader with experience coordinating, consolidating, and preparing business plans, reports, and presentations for senior management and Boards of Directors. With proven success in finance, commercial and financial management, and accounting across the oil and gas industry. Skilled in analyzing data and identifying opportunities to improve business performance

Constance E. Swaniker is a master craftsman, entrepreneur, and educationist. Her key passions are skill development and job creation for youth, particularly females. She coined and conceptualized the practice of "Precision Quality", a curriculum aimed at enhancing technical education and training to meet industry requirements. It combines the practice and theory needed to improve the teaching of TVET. She is a member of the Board and sole shareholder of Accents and Arts Company Limited.



The A&A Team

This team of dedicated and disciplined workers have been trained over the years through mentoring, technical skills development and capacity building.

Accents and Art also creates and nurtures a healthy, creative, respectful and pleasurable office and workshop environment in which our employees are fairly compensated and encouraged to respect the customer and the quality of work we produce.

Currently, we have a workforce of thirty (30) permanent skilled workers including welders, fabricators, carpenters, sprayers, artists and upholsters.

Our entire workforce appreciates the necessity of total quality that underlines the mission of Accents & Art—ensure timely delivery of products to our customers and continue to develop a versatile and exceptional product range.



Services

Welding and Fabrication
Prototype & Design (CAD services)
Laser cutting & Engraving
Container Buildings
Spraying & Finishing
Interior Decoration
Refurbishment
Landscaping
Training

Quality Control Process

At Accents & Art, we understand that our clients need more than just furnishing, but rather a sense of elegance, a reassurance of fine workmanship, ease of use and practicality.

We use the best iron, wood, cane and glass materials to produce a fascinating combination of imagination and millenary.

Due diligence is performed in order to ensure compliance with our clients' requirements and particular situation.

After years of experience in manufacturing exceptional products, we are totally committed to fulfilling our clients' vision for the truly distinctive and extraordinary both in style and quality.

The adoption of quality control in our production setup has redefined our manufacturing process leading to a lowering of production costs and the addition of value to quality



Using modern machinery and equipment, we are able to hand and machine forge iron into limitless shapes and forms and fabricate intricate designs.

We are well positioned to consistently deliver both mass and customized solutions on schedule thereby not compromising project timelines.

PRICING AND PAYMENT

Our products are competitively priced and reflect a unique value that our competitors cannot provide.

Delivery time ranges from two (2) weeks to twelve (12) weeks depending on the quantity of work to be done.

Accents & Art makes free delivery to addresses within Accra, a delivery charge is paid by the client.

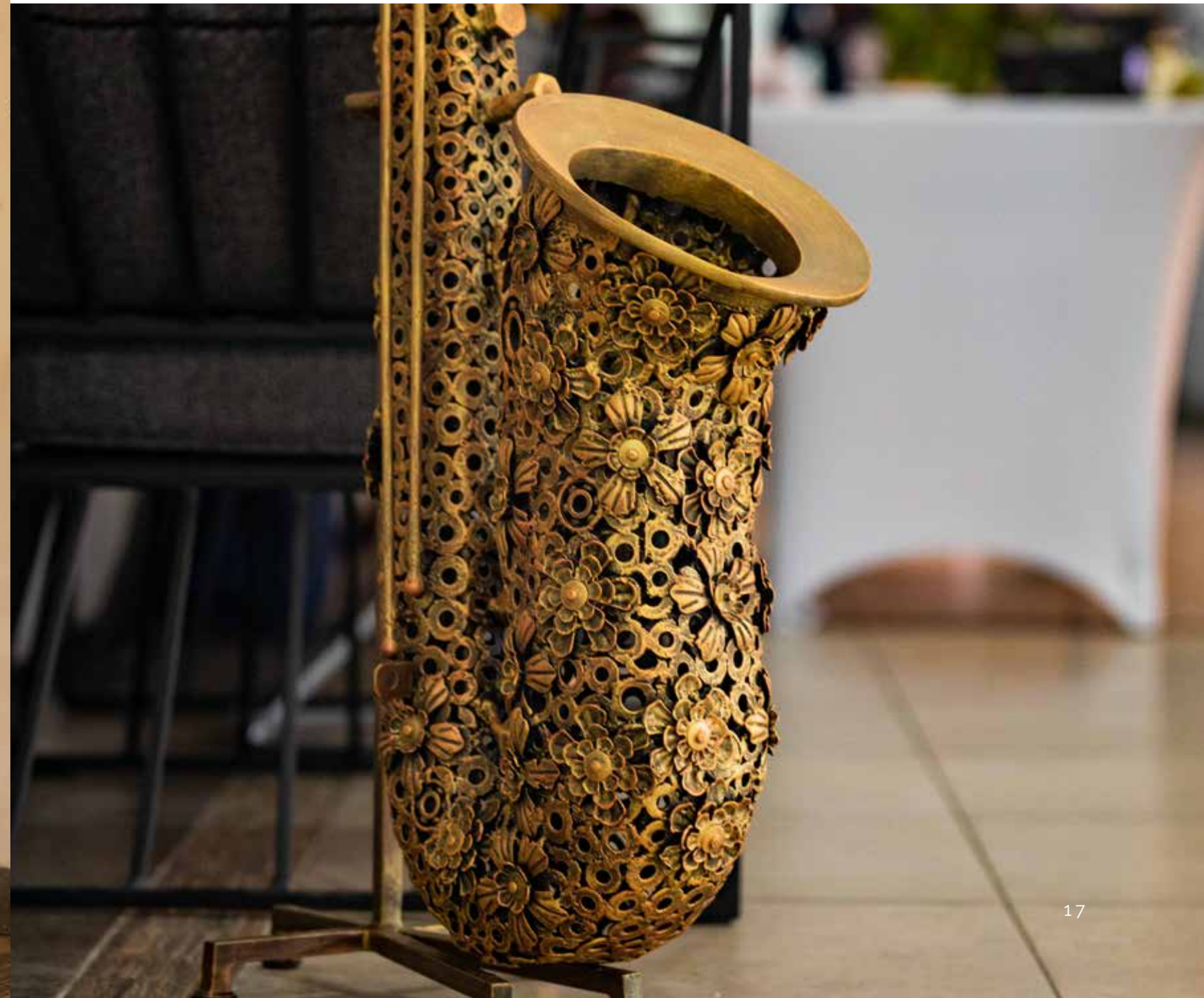
Due to the customized nature of our products, pricing is primarily based on design and type of materials required and is negotiable on residential and commercial basis.

Cost of utilizing equipment, production and man-hours are included in the total cost. Invoices are valid for 1 week from date of issue.

Prior to commencement of production, the client pays 70% of the total invoice amount and the remaining 30% after delivery and completion of work. Payments may be remitted by cash, cheque or bank transfer and must be payable ACCENTS & ART.

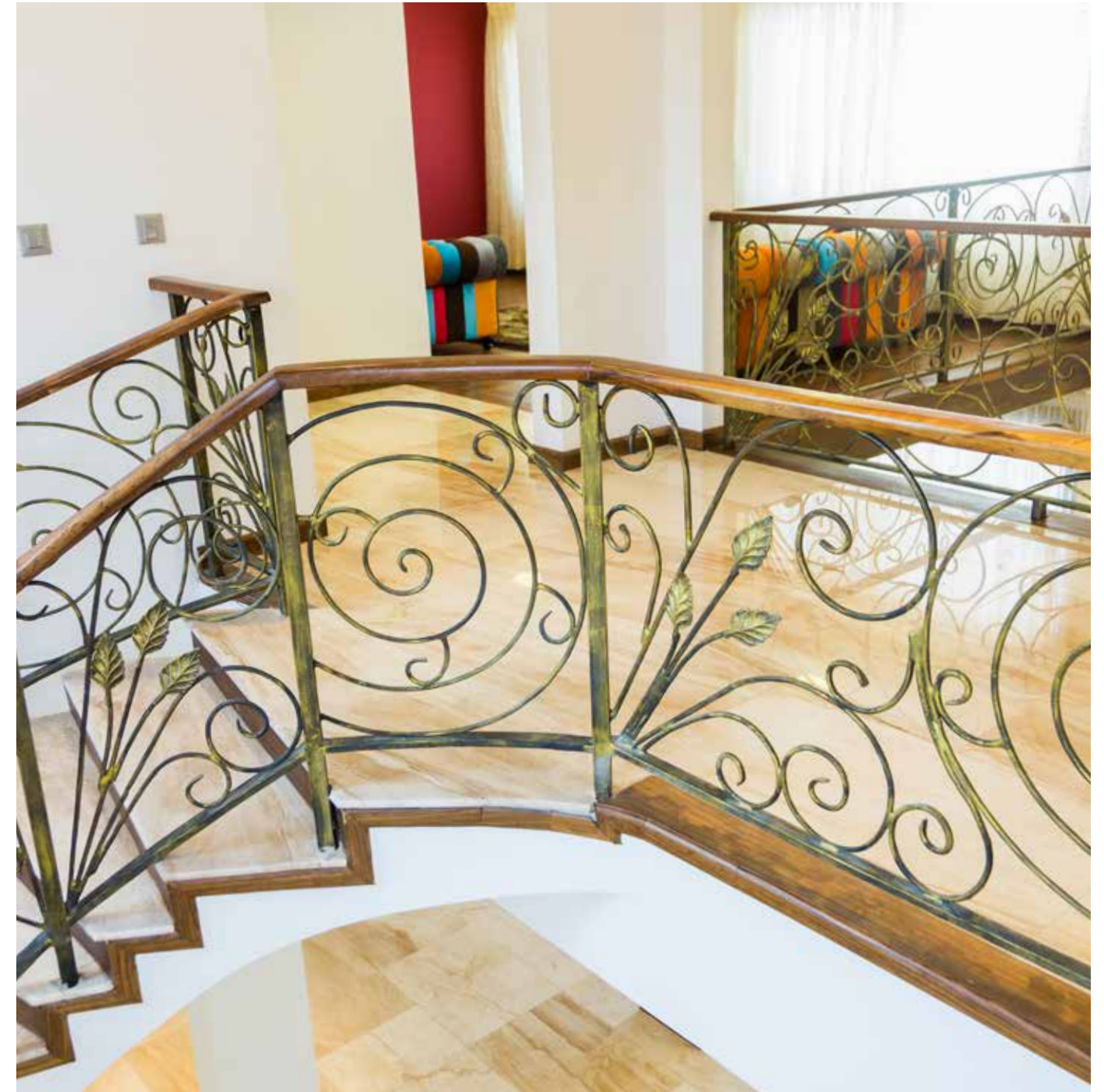


Product Categories



BALUSTRADES

SELECTED
PRIVATE HOMES







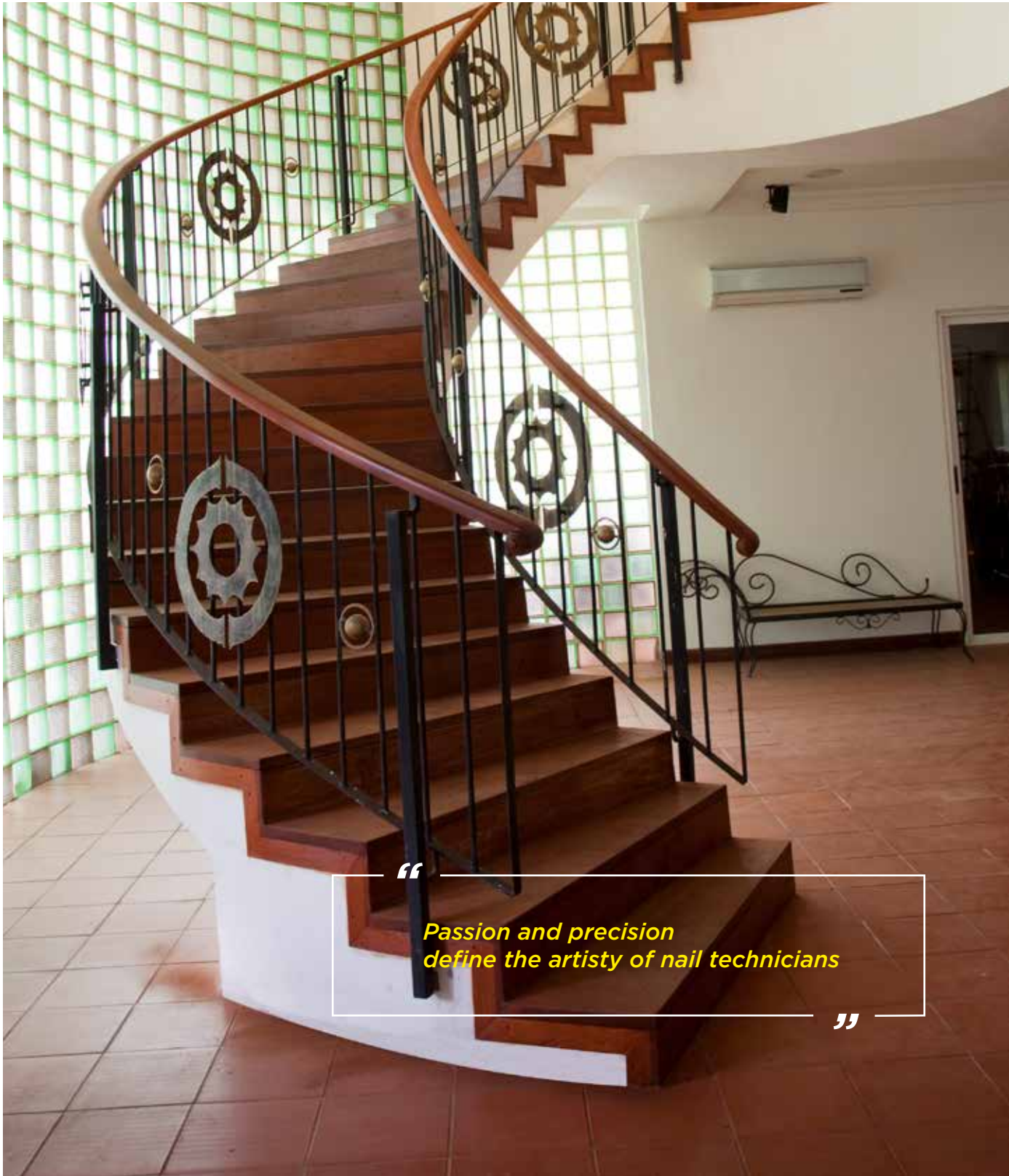
“
Quality over quantity always
”





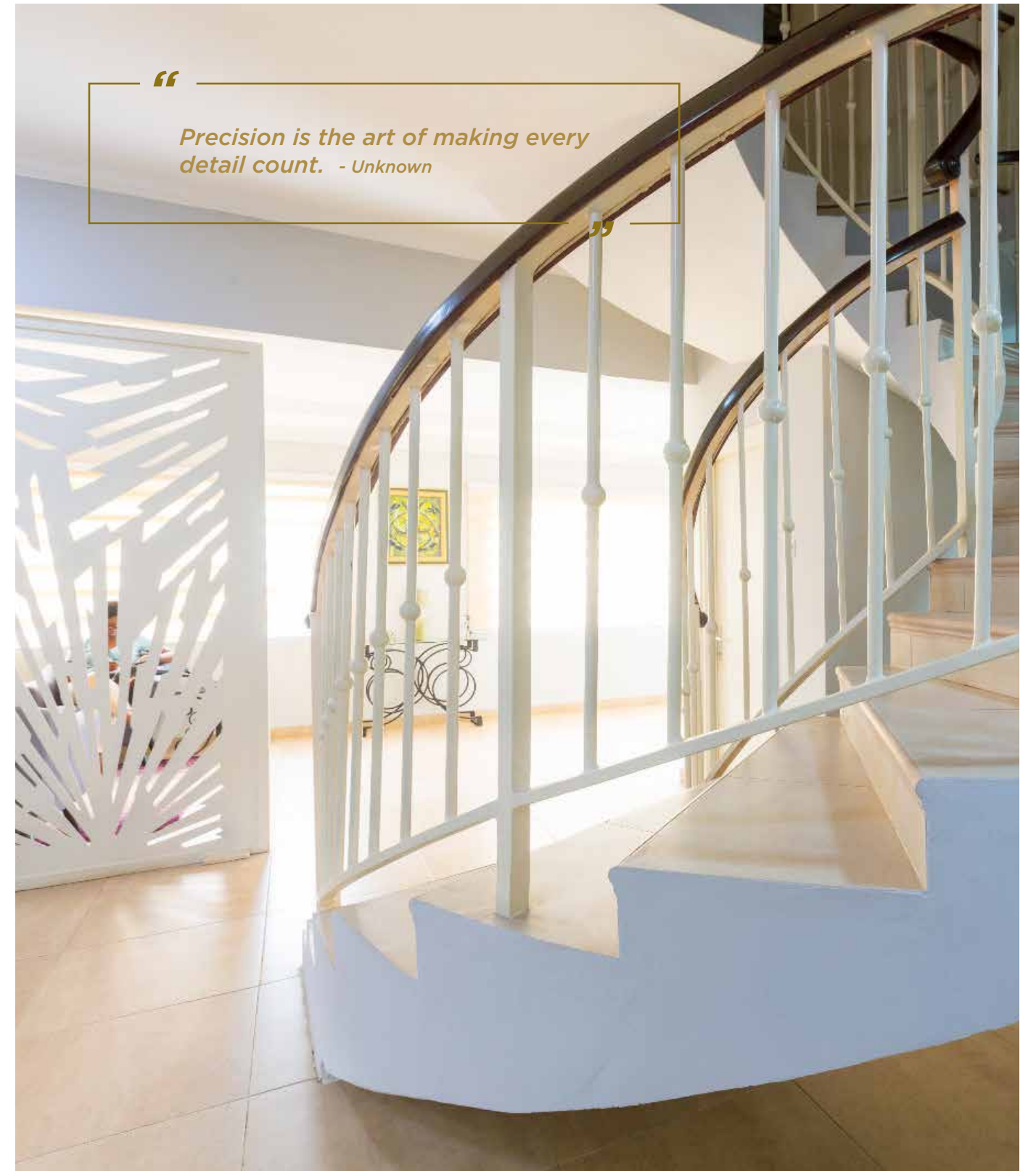




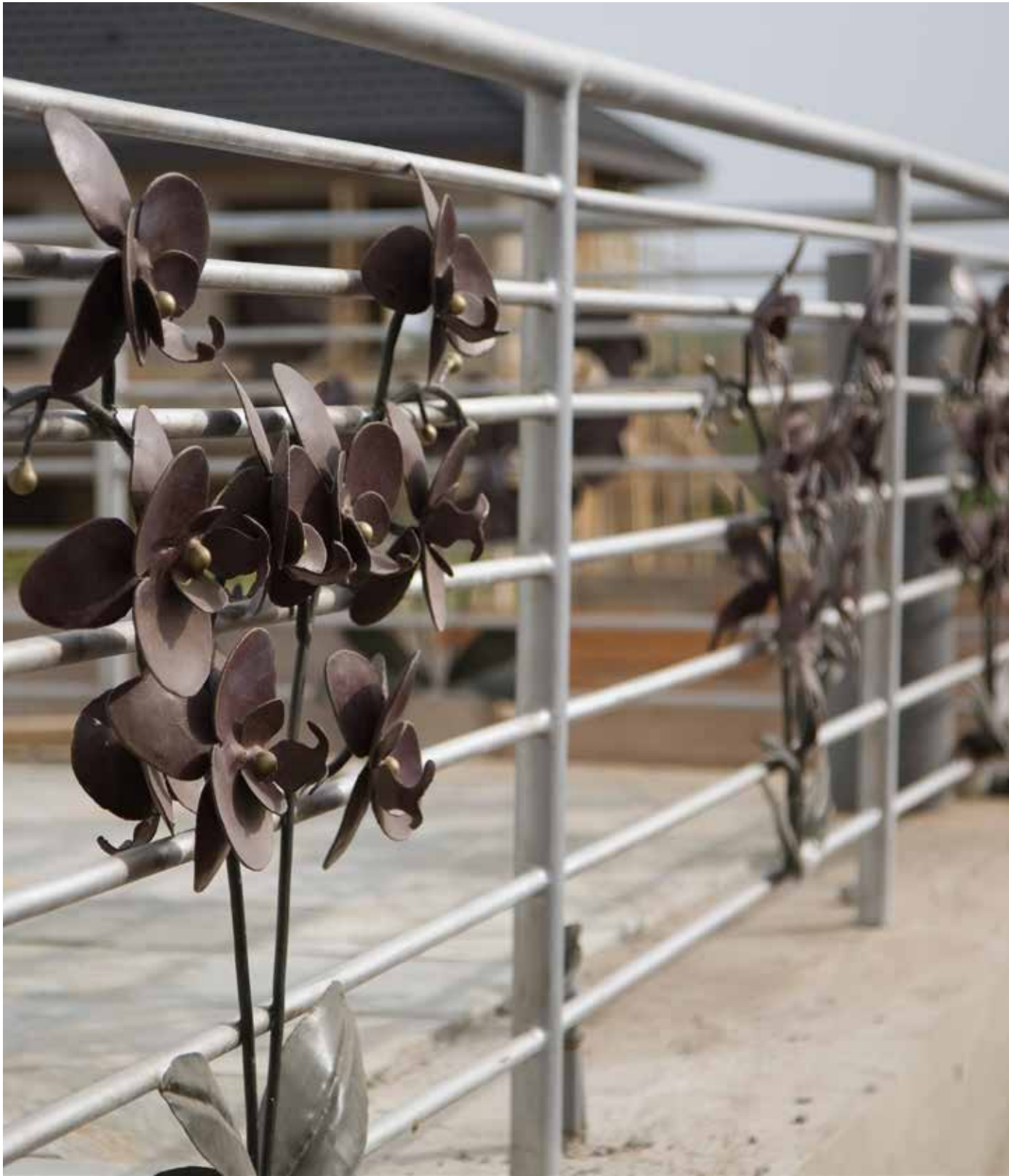


“
Passion and precision
define the artistry of nail technicians
”















COMMERCIAL
PROPERTIES



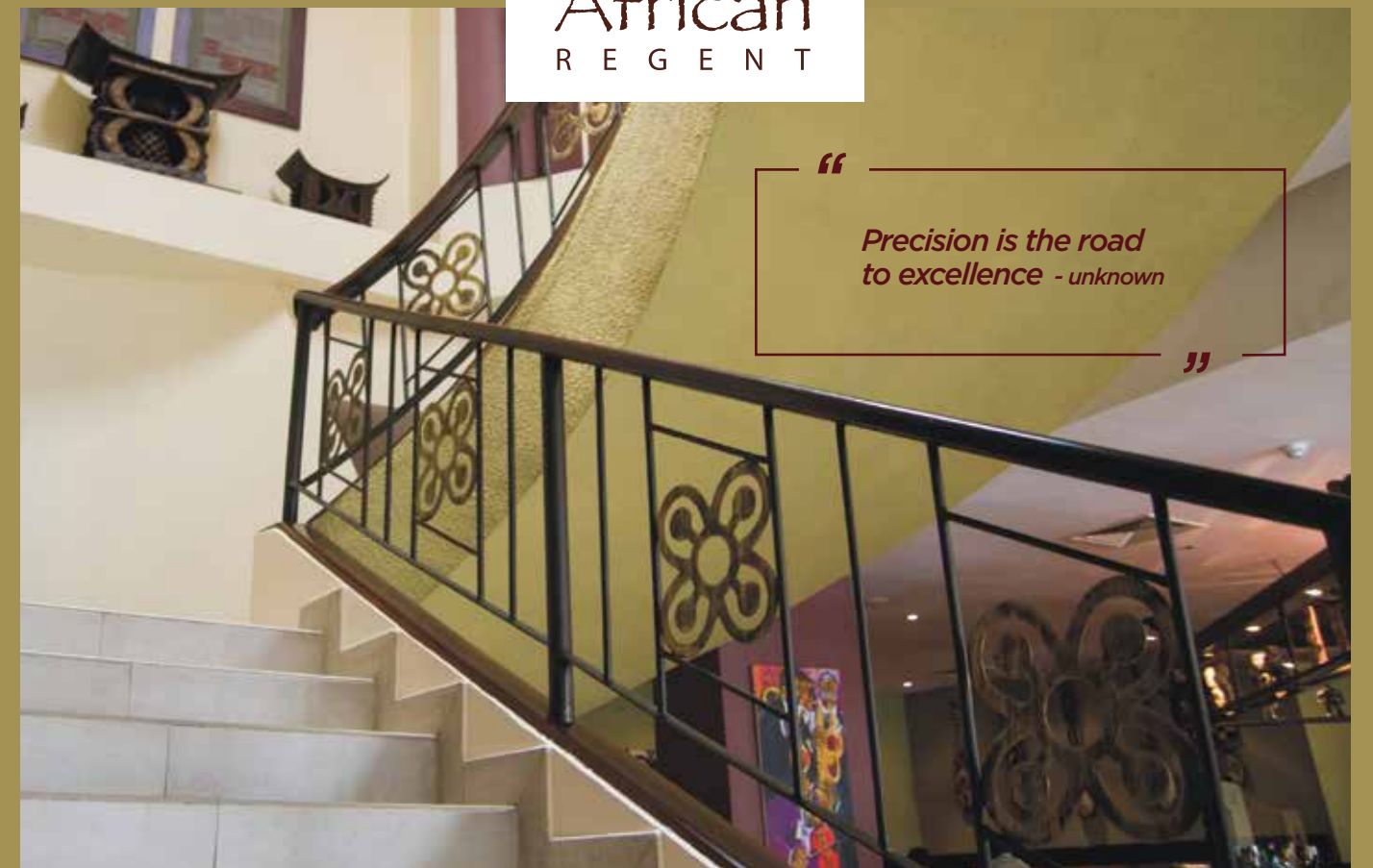




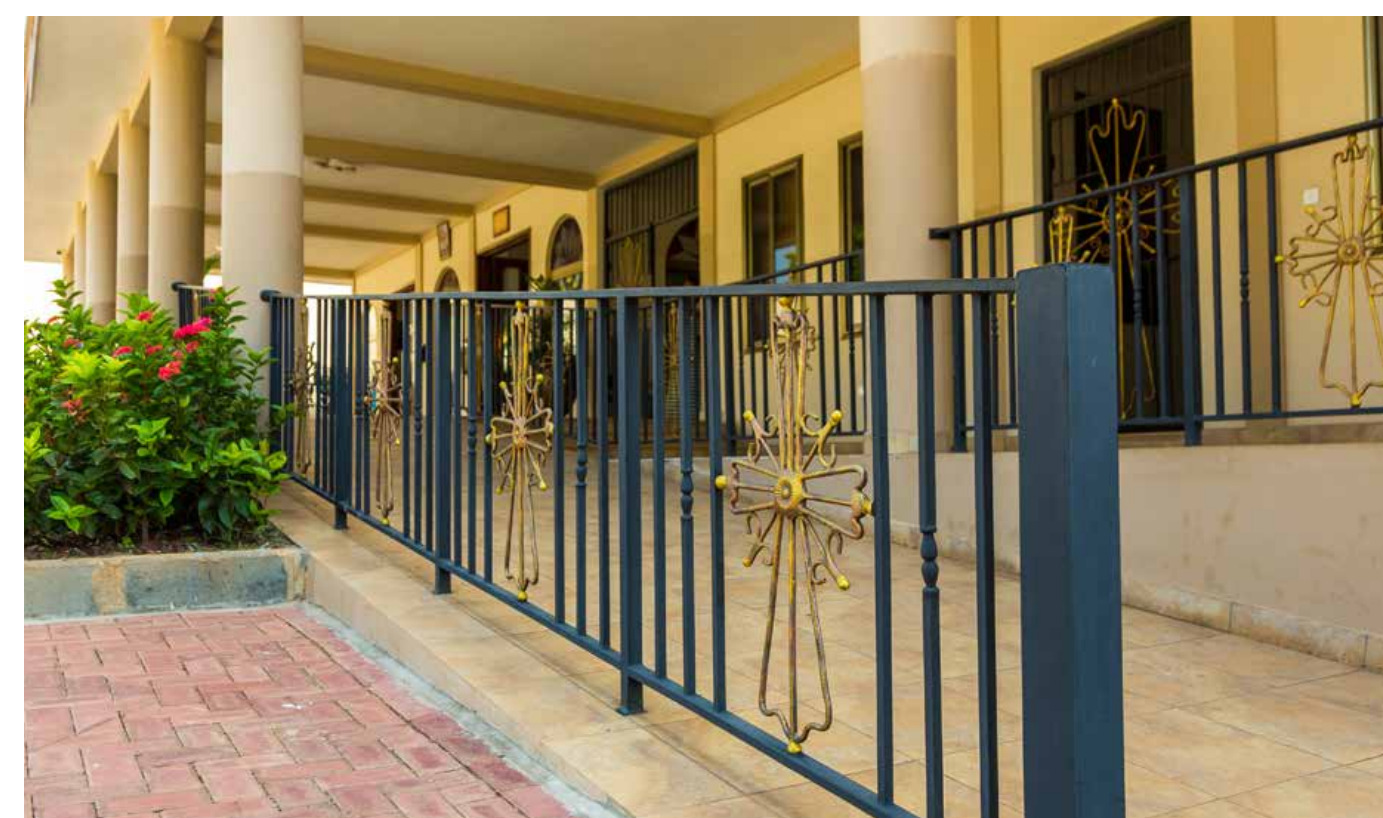
THE
African
REGENT



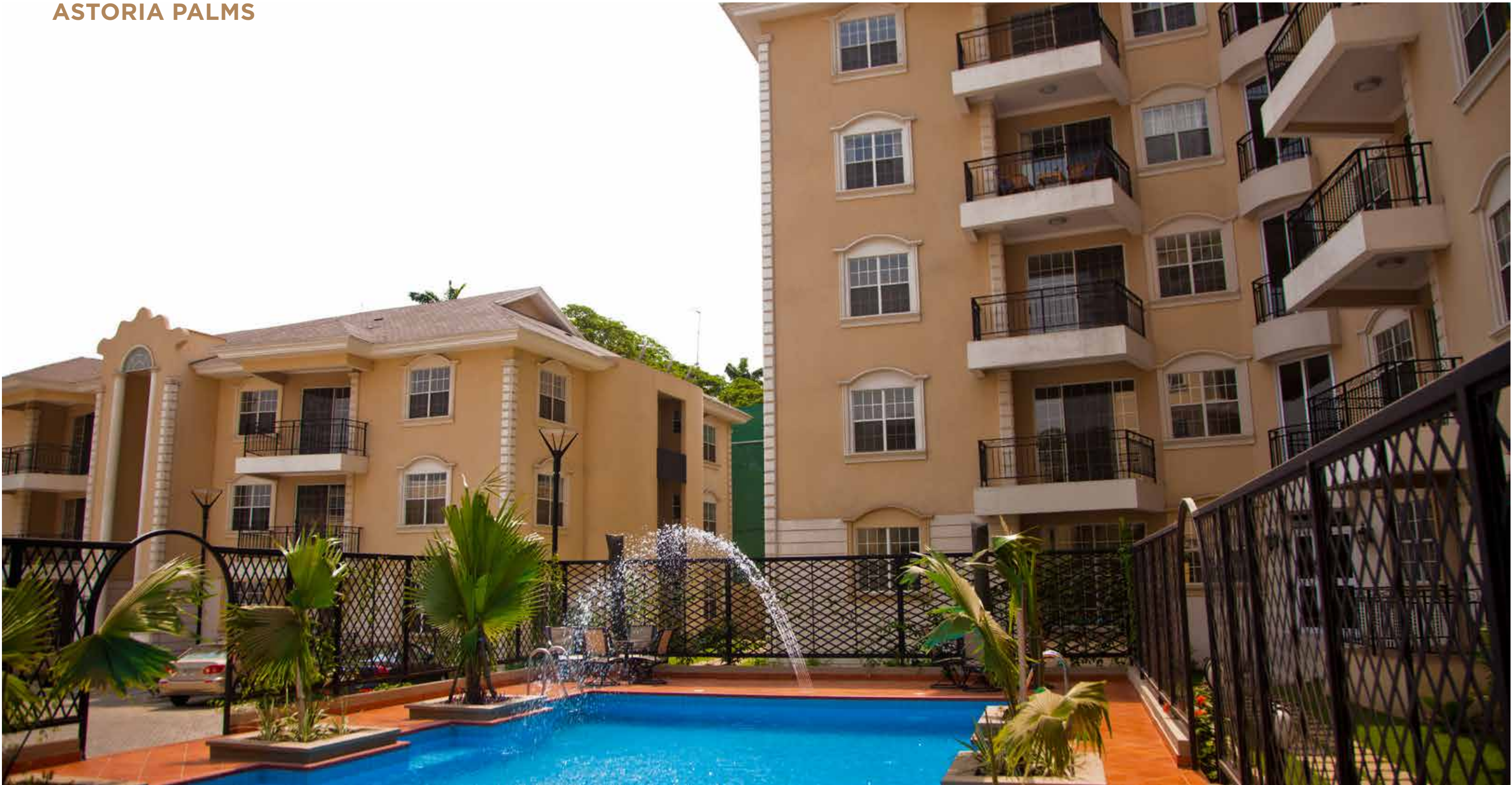
THE
African
REGENT



“
Precision is the road
to excellence - unknown
”



ASTORIA PALMS









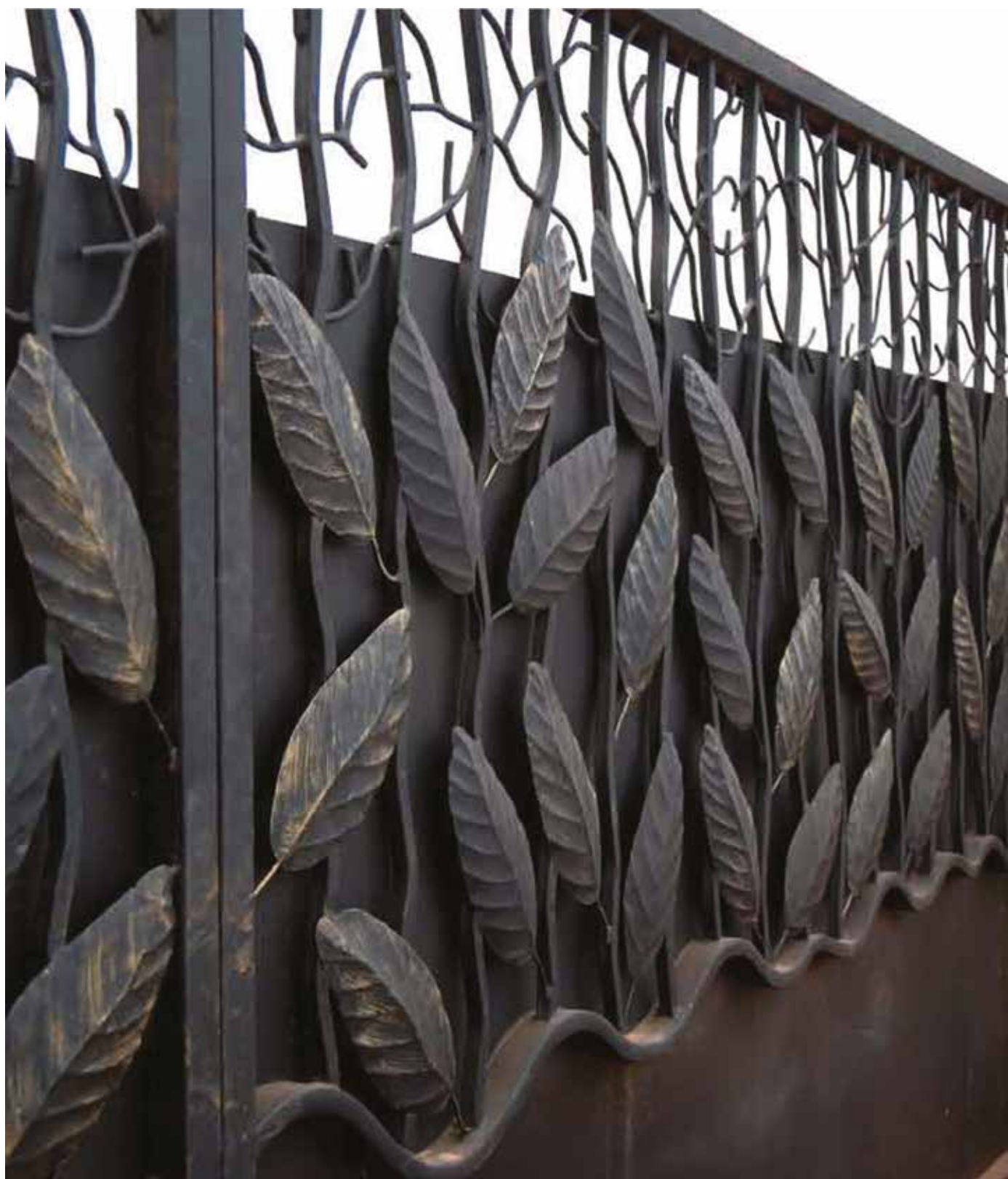


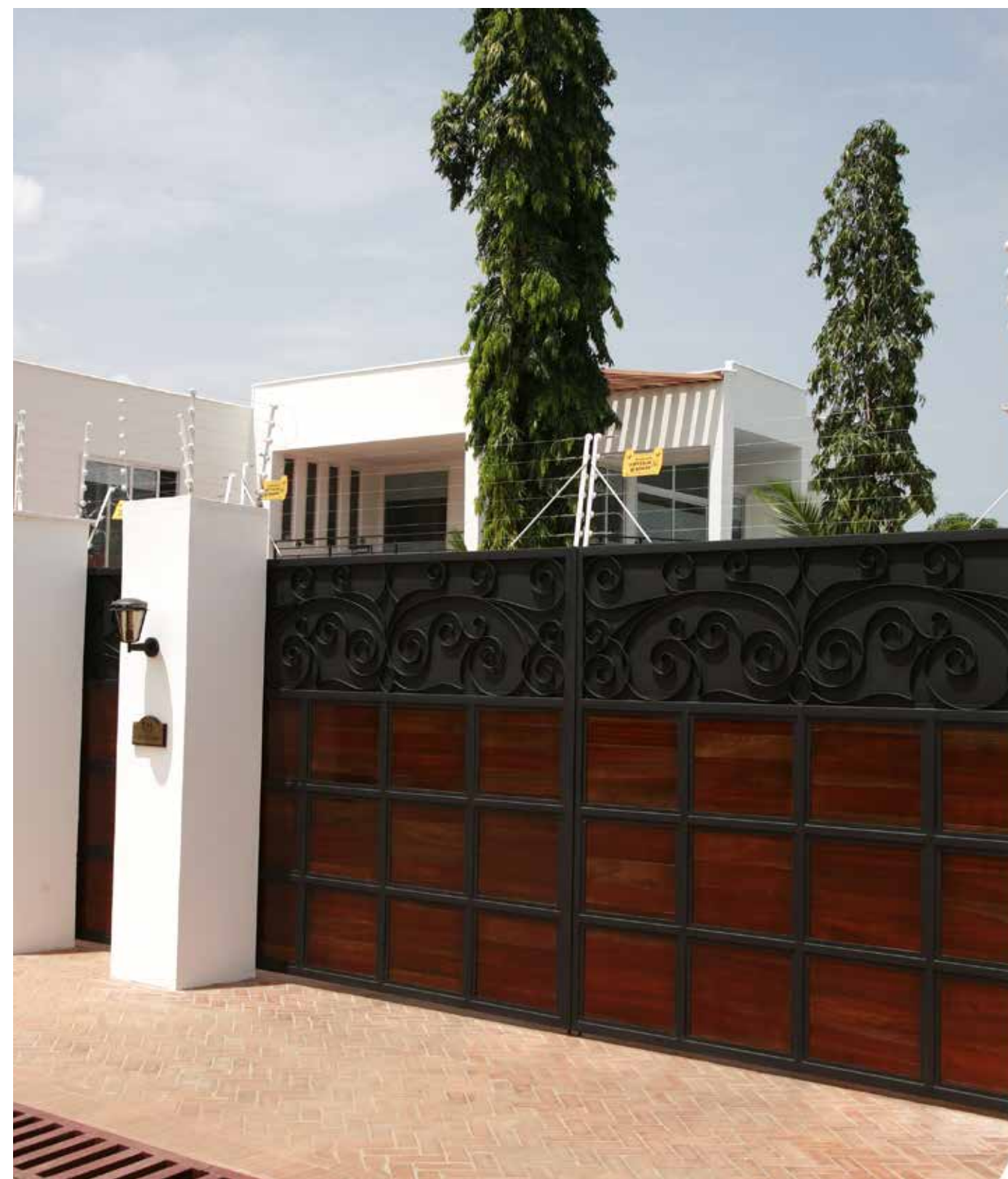
INTERNATIONAL CENTRAL
GOSPEL CHURCH
CHRIST TEMPLE EAST



ACHIMOTA GOLF COURSE

GATES & FENCES













BESPOKE FURNITURE &
ACCENT PIECES

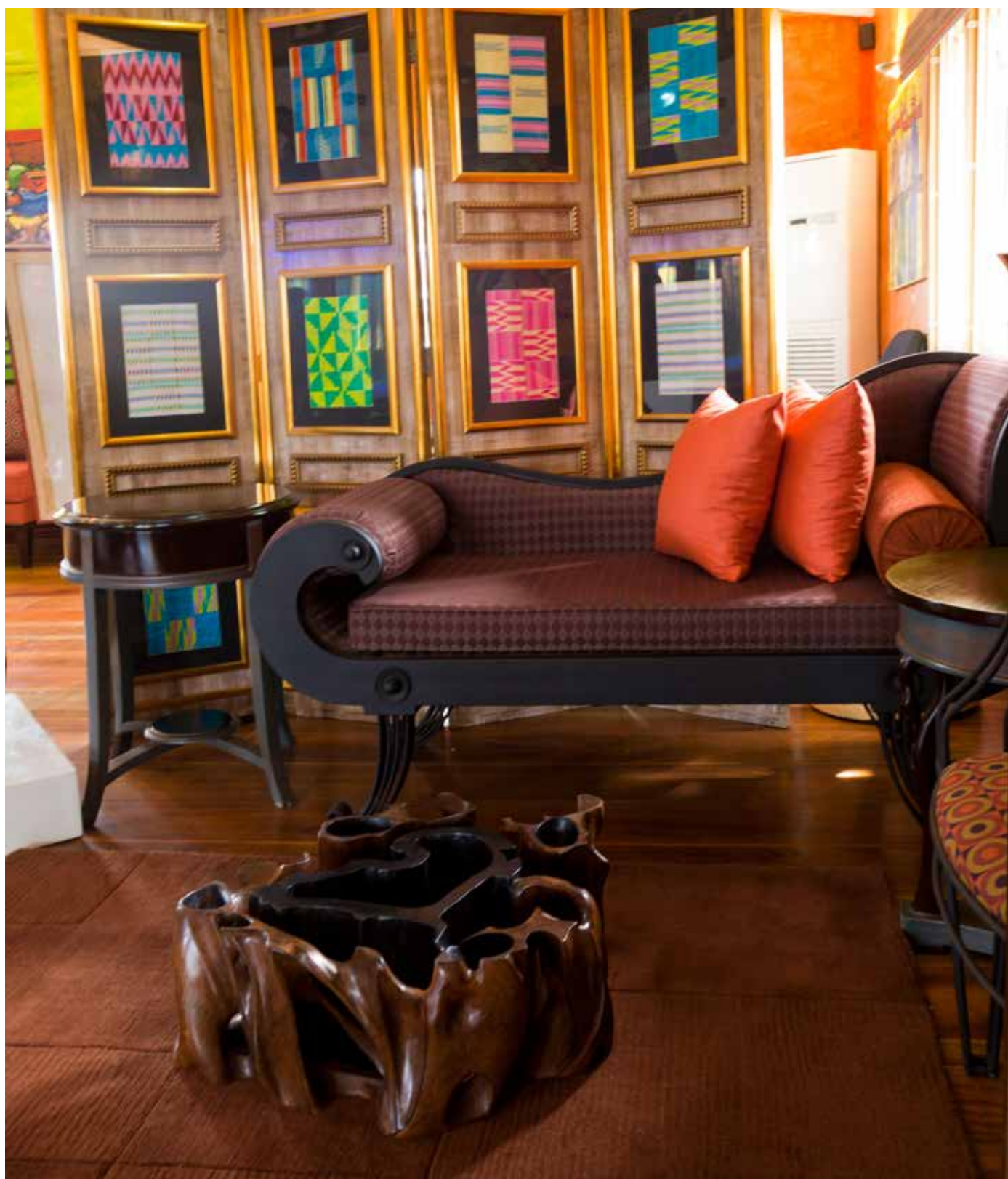
Bespo

oke





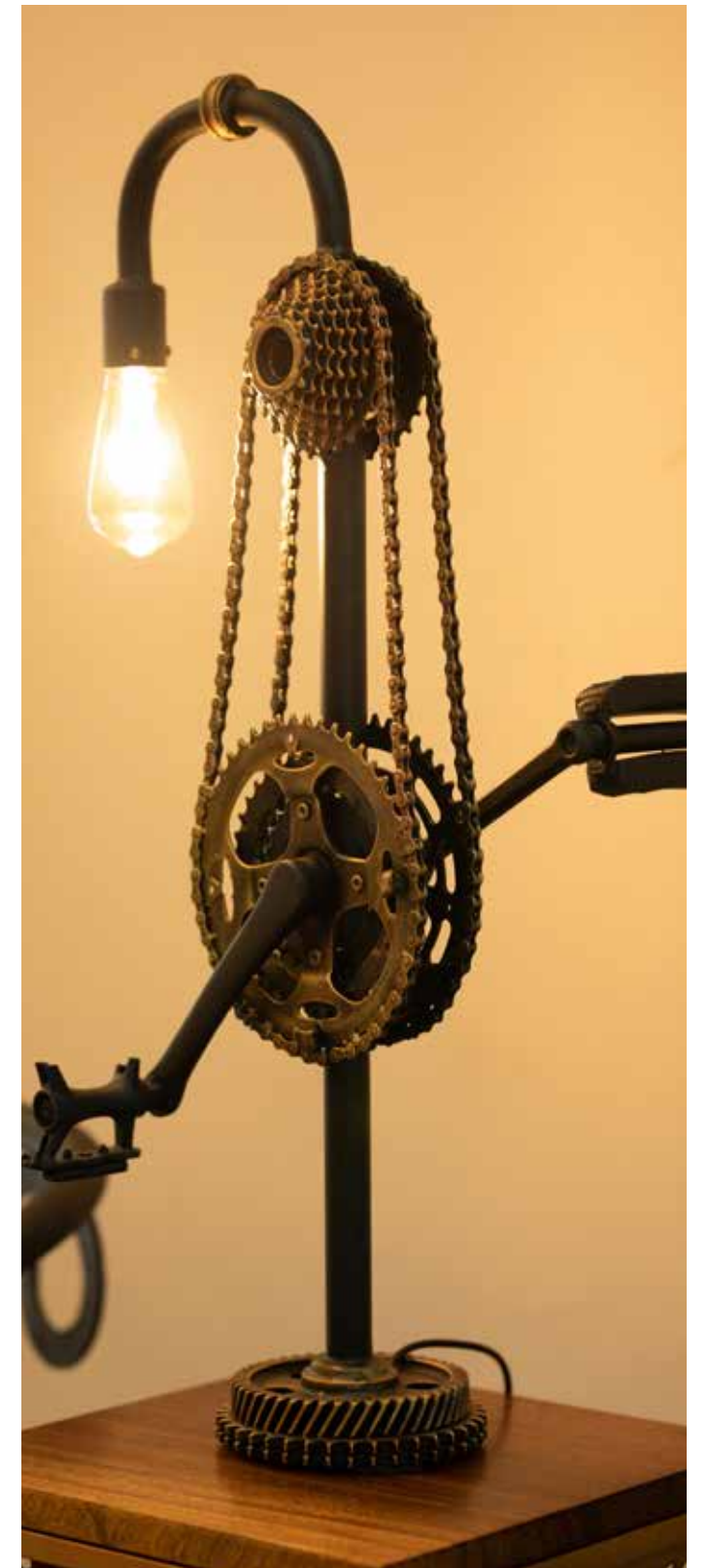


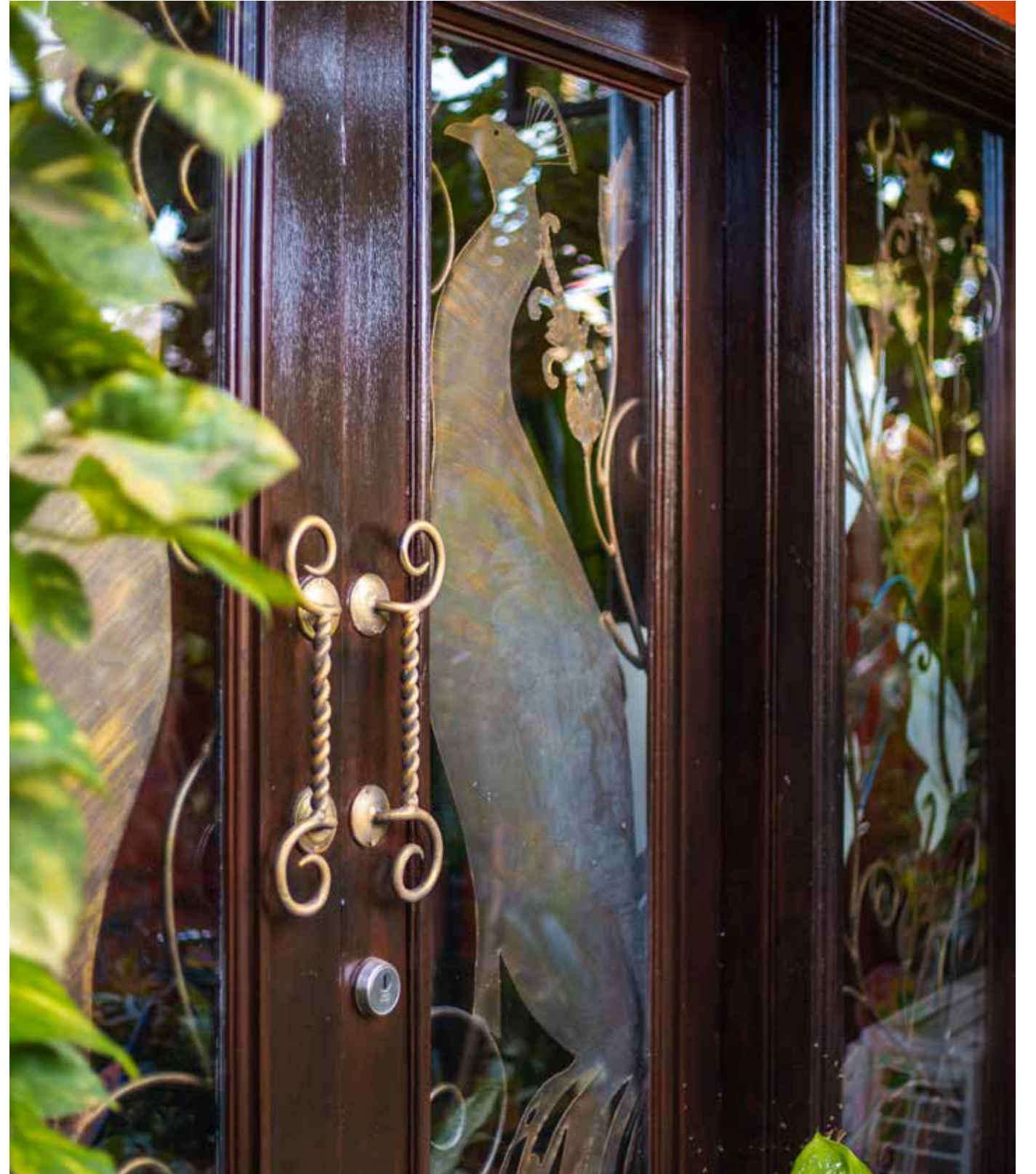


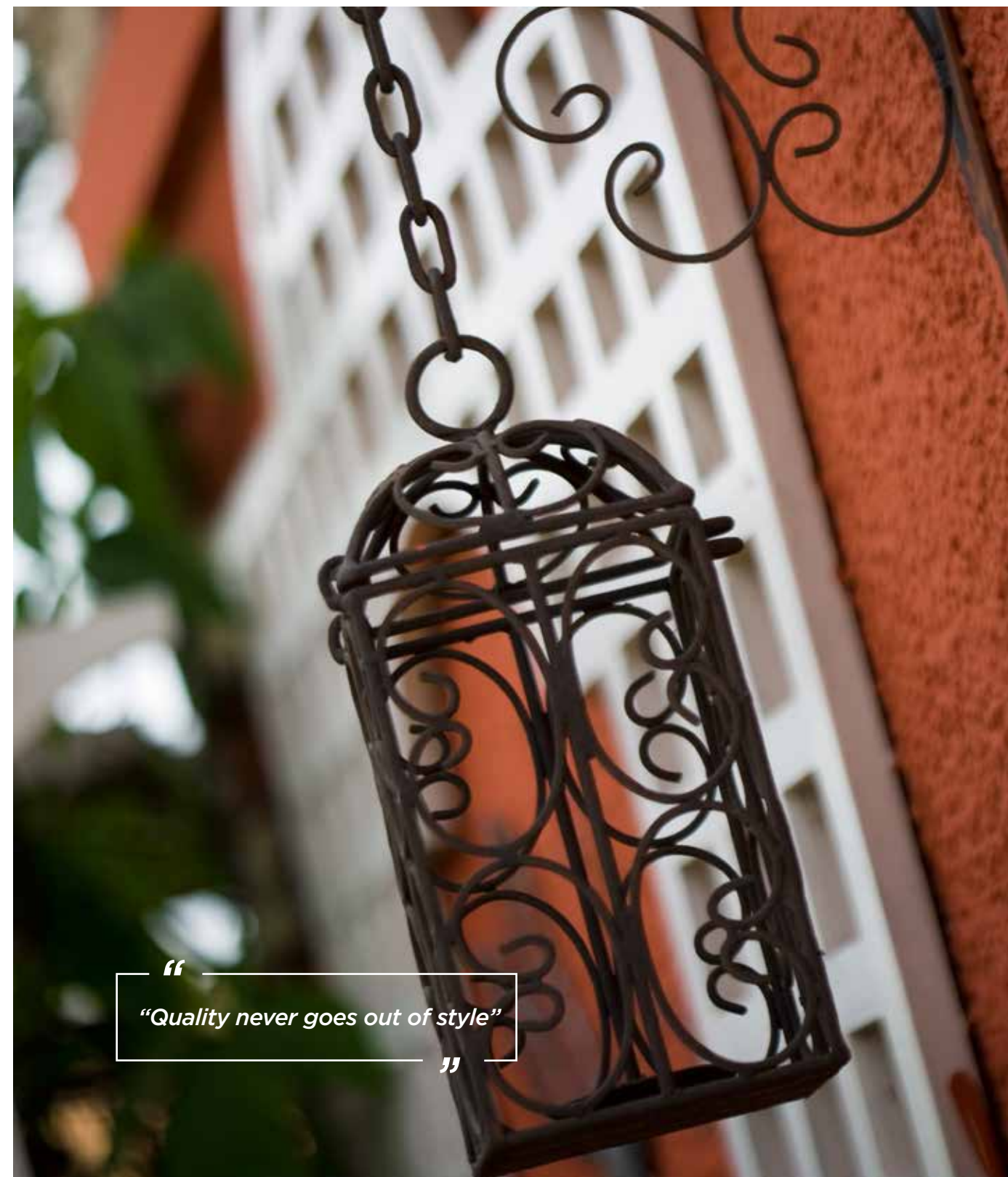




“
Sometimes your circle
decreases in size but increases
in Value
”





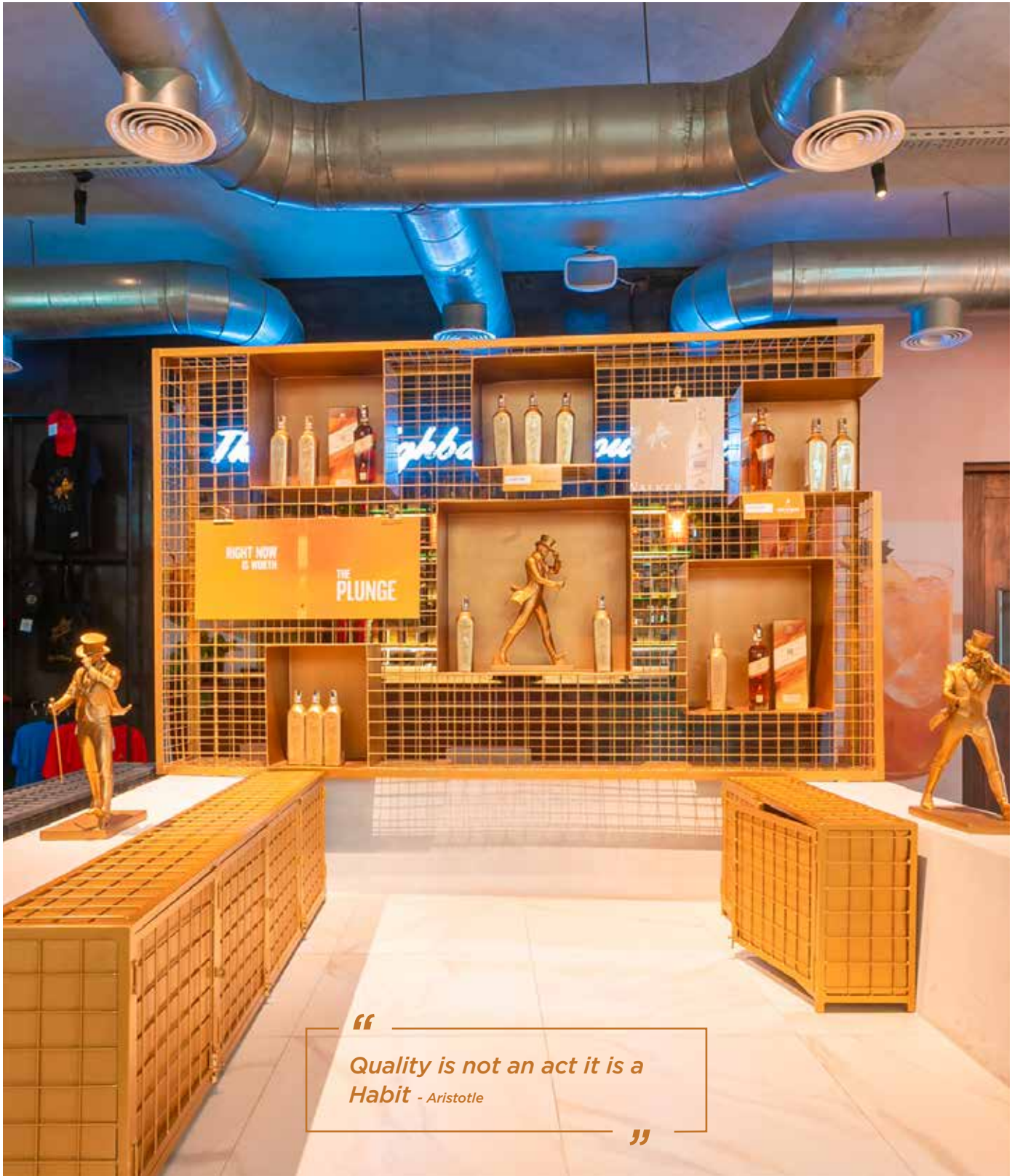






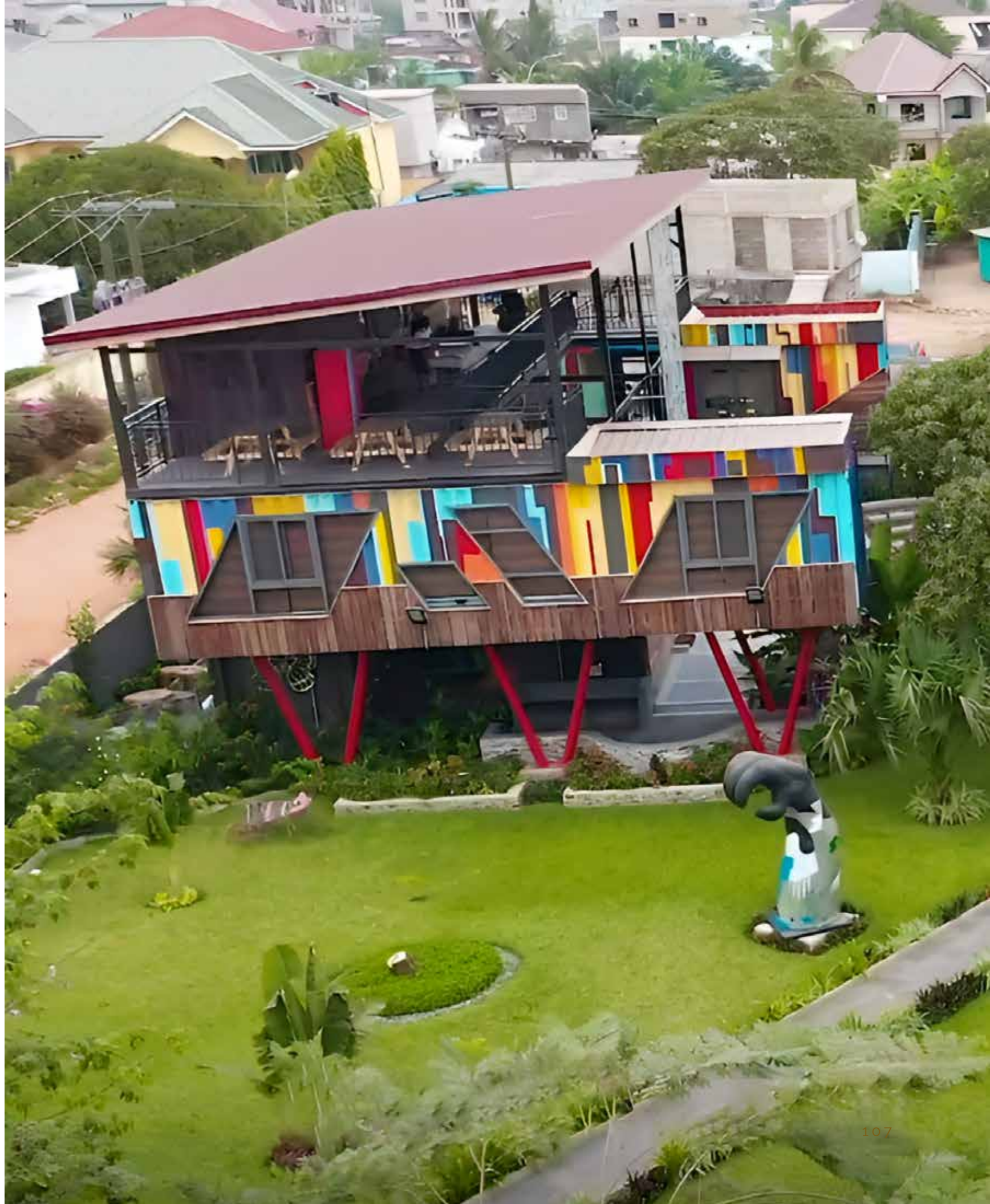
Industrial

INDUSTRIAL











SCULPTURE





“

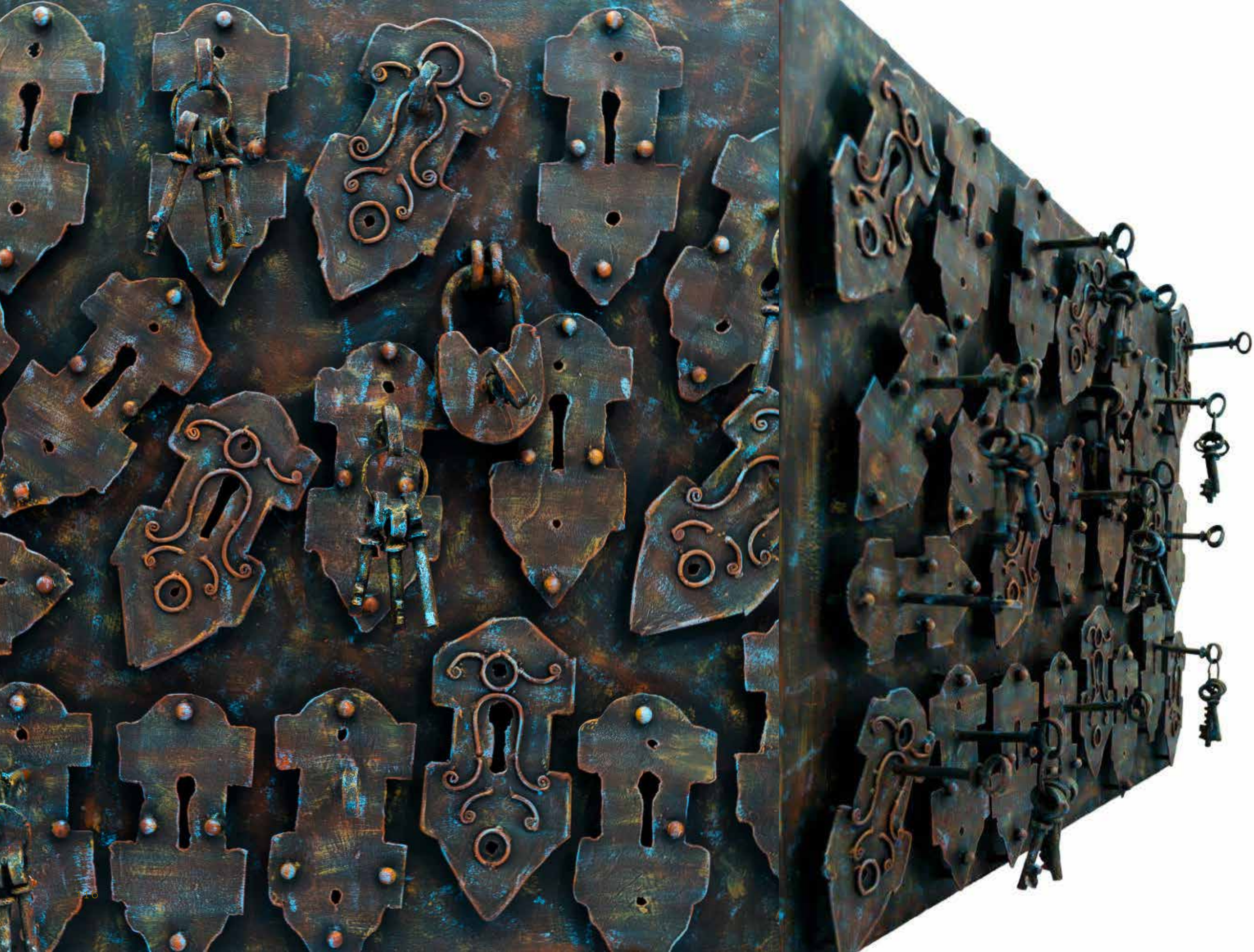
crafts . man . ship

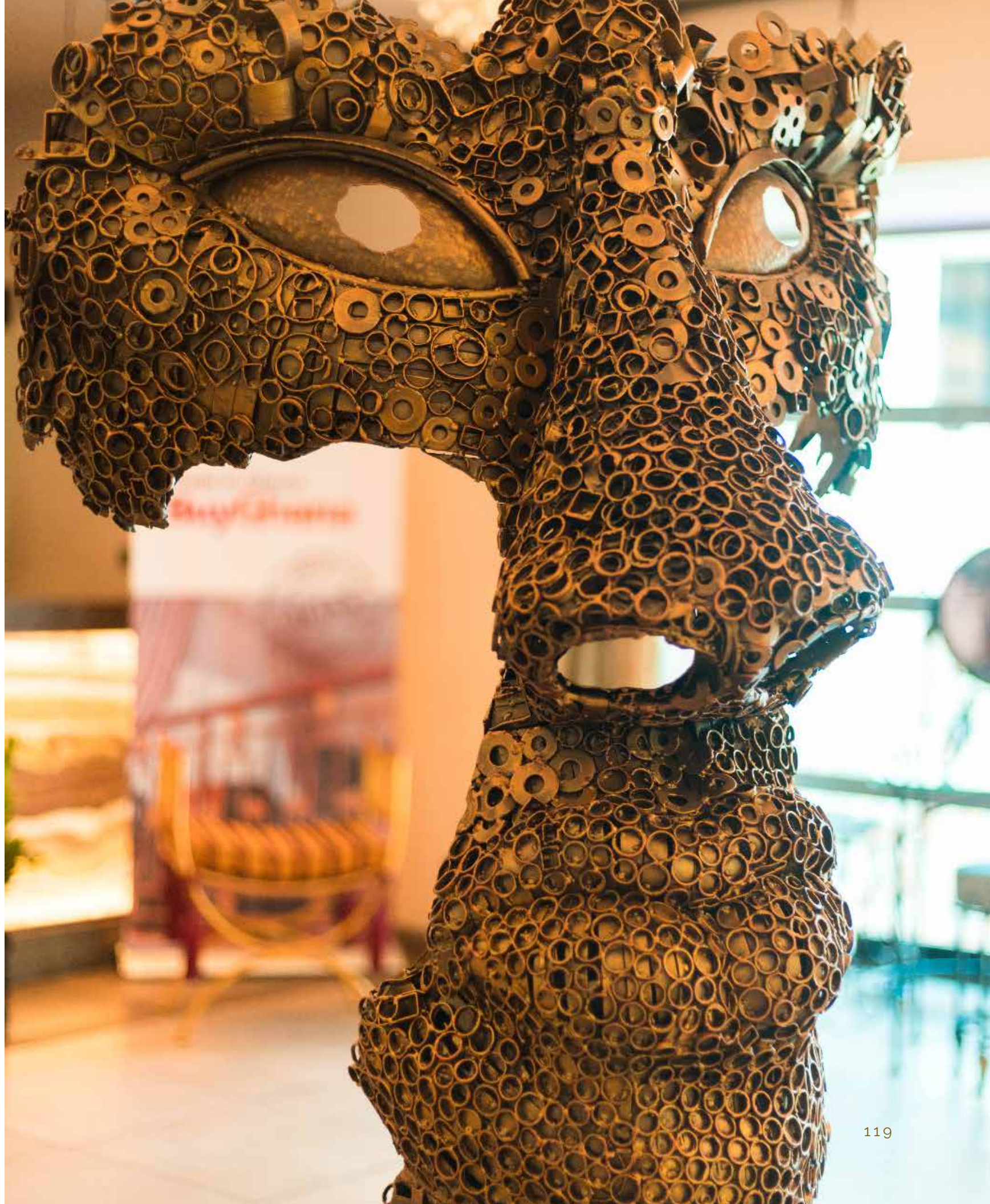
*the quality of design and work shown in
something made by hand, artistry.*

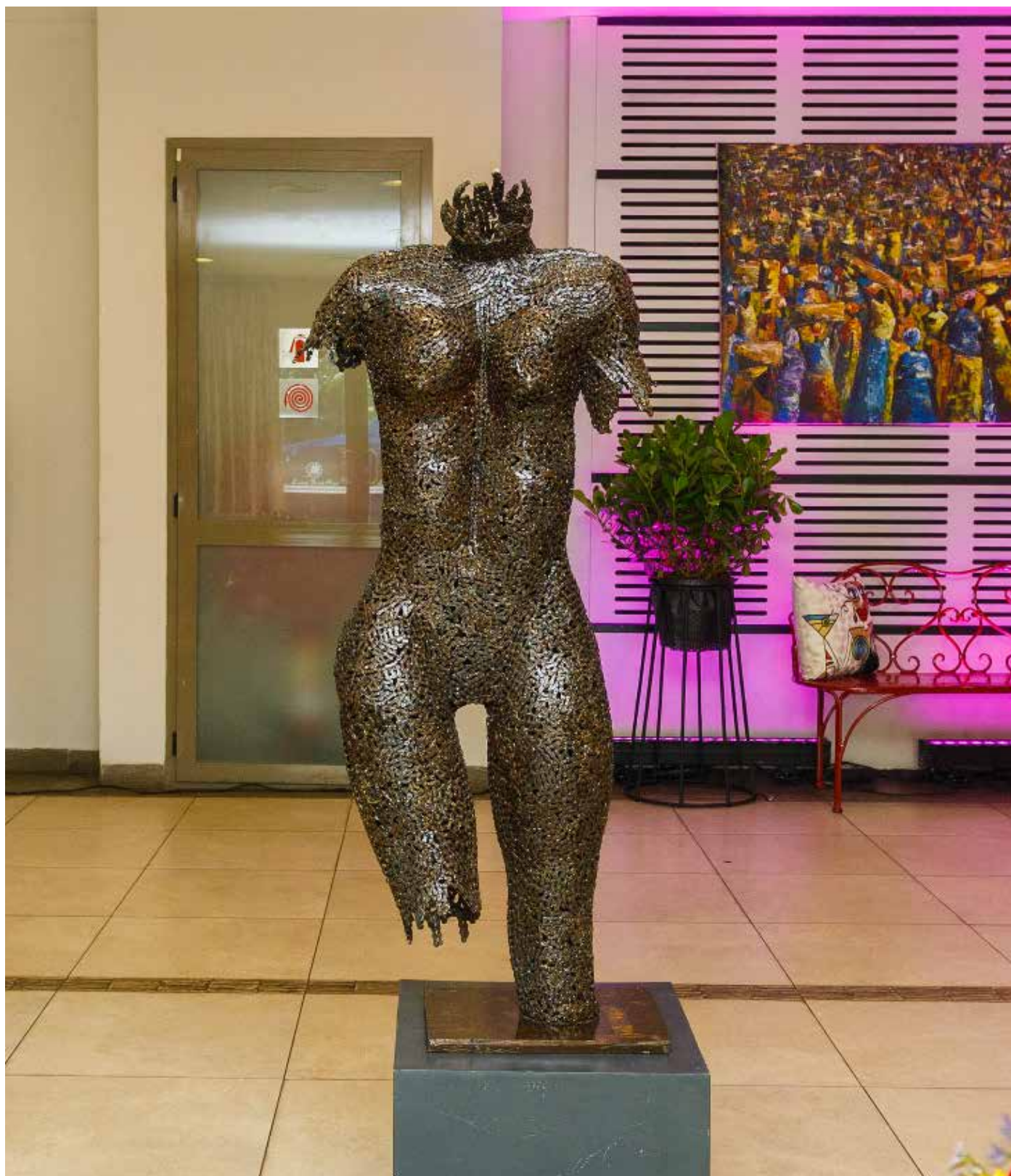
`a piece of fine craftsmanship`

”







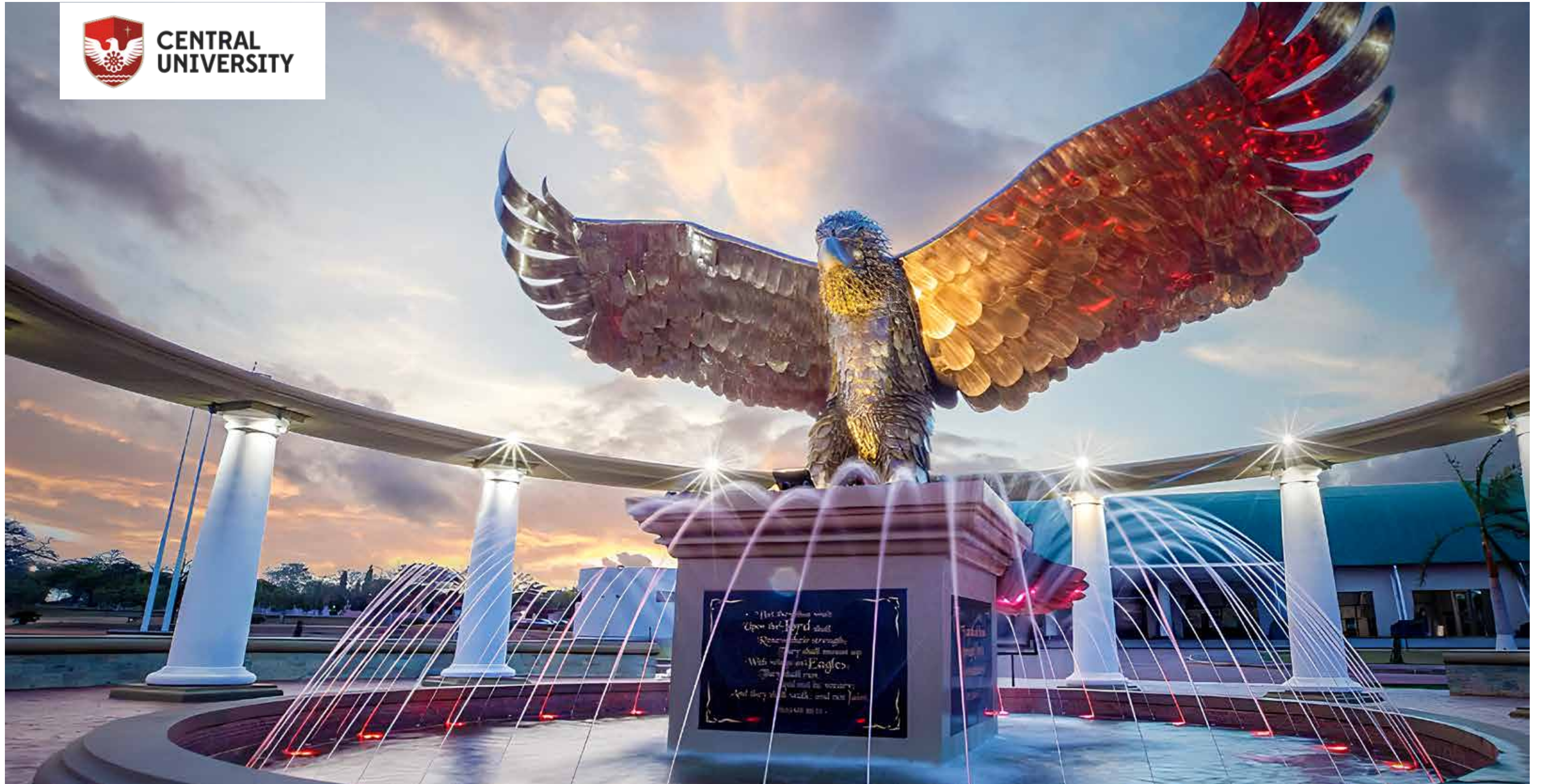








**CENTRAL
UNIVERSITY**



EFUA SUTHERLAND PARK







Clientele

At Accents & Art, we understand that our clients need more than just furnishing but rather a sense of elegance, a reassurance of fine workmanship, ease of use and practicality. The uniqueness of our products coupled with varied options of attractive colour schemes continually captures their imagination.

Clients	Location
Hotels & Lodges	
African Regent Hotel	Airport Residential Area
Cozy Ridge Hotel	Mamfe
Penta Hotel	Osu RE
Sunlodge Hotel	Tesano
Pekan Hotel	East Legon
Labadi Beach Hotel	Labadi
Mahogany Lodge	Cantonments
Oak Plaza Hotel	East Legon/Spintex
Crystal Palm Hotel	North Kaneshie
The Swan Hotel	North Kaneshie
Monticello Villa	Airport Residential Area

Clientele

Clients	Location
Corporate Institutions	
TV3, Adesa We Aviance Company Limited Expert Travel & Tours Schlumberger SEACO Inc Taysec Developments	TV3 Studios, Kanda Kotoka International Airport –Accra Labone Silver Star Tower, Airport City Cantonment Gradens; Taysec Gardens; Alema Court; Palm Court; Cedar Court; Hansen Court; Baytree Gradens
Accra Polo Club CCTC/ Finatrade Exopa Modeling Agency Tintas Coral First Catering Limited UNCTAD XII Scancom Ghana Limited (MTN) Vodafone Ghana Headquarters Sapphire Entertainment ETV Ghana Modex Oil	Accra Spintex Road Trade Fair, La Accra Spintex Road Accra, Ghana Ridge, Accra Accra Accra Accra Accra





Accents & Art

P.O. Box KN80 Kaneshie-Accra

GPS: GA-358-6019

Tel: +233 273631715 /277 350022 /302 223395

Email: accentsartss@gmail.com

Website: www.accentsandart.com